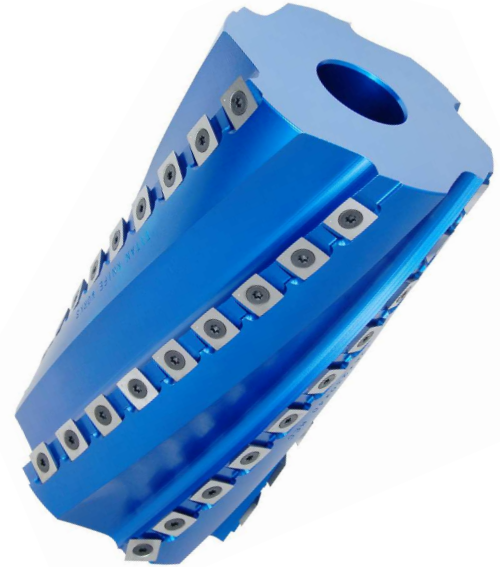


Spiral Insert Knife Surfacing Heads - No Sharpening Required

Quiet Cutting: Looking for a better surfacing head option? Spiral knife insert heads make constant contact with the material offering reduced cutting noise - typically 20 decibels less. Each long wearing carbide knife has four edges that can be dulled before replacement. These heads improve material finishes on cross grain, lower long term tooling cost, and eliminate sharpening costs. Our spiral heads offer special radius edge inserts to reduce any chance of knife corners marking your material. Made from 7071-T6 high strength aircraft aluminum. Heads include a set of carbide knives ready to run and a torx wrench for turning and replacing the knives. Heads use 15 x 15 x 2.5 inserts.

Head prices include set of knives. Most heads in stock for immediate delivery.



Spiral Insert Knife Surfacing Heads - 6 Row

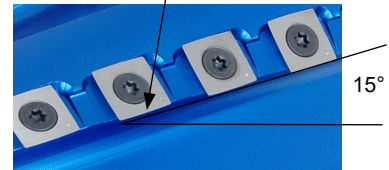
| Cutting Length | Rows of Knives | Body Diameter | Standard Bore | Part # | Price |
|--|----------------|---------------|---------------|---------------|-------------|
| 2" (50mm) | 6 | 100mm | 1.25" | MS10042 * | \$290.00 |
| 4" (100mm) | 6 | 100mm | 1.25" | MS10044 * | \$368.00 |
| 6" (150mm) | 6 | 100mm | 1.25" | MS10046 * | \$449.00 |
| 2" (50mm) | 6 | 125mm | 40mm | MS12562 | \$335.00 |
| 4" (100mm) | 6 | 125mm | 40mm | MS12564 | \$463.00 |
| 6" (150mm) | 6 | 125mm | 40mm | MS12566 | \$579.00 |
| 7" (180mm) | 6 | 125mm | 40mm | MS12567 | \$675.00 |
| 8" (200mm) | 6 | 125mm | 40mm | MS12568 | \$755.55 |
| 9" (230mm) | 6 | 125mm | 40mm | MS12569 | \$850.00 |
| 2" (50mm) | 6 | 125mm | 1.5" | MS12562-1.5 | \$335.00 |
| 4" (100mm) | 6 | 125mm | 1.5" | MS12564-1.5 | \$463.00 |
| 6" (150mm) | 6 | 125mm | 1.5" | MS12566-1.5 | \$579.00 |
| 7" (180mm) | 6 | 125mm | 1.5" | MS12567-1.5 | \$675.00 |
| 9" (230mm) | 6 | 125mm | 1.5" | MS12569-1.5 | \$850.00 |
| 9.5" (240mm) | 6 | 125mm | 1.5" | MS12569.5-1.5 | \$860.00 |
| 2" (50mm) | 6 | 140mm | 1-13/16" | MS14062 | \$350.00 |
| 4" (100mm) | 6 | 140mm | 1-13/16" | MS14064 | \$496.00 |
| 6" (150mm) | 6 | 140mm | 1-13/16" | MS14066 | \$600.00 |
| 7" (180mm) | 6 | 140mm | 1-13/16" | MS14067 | \$725.00 |
| 9" (230mm) | 6 | 140mm | 1-13/16" | MS14069 | \$875.00 |
| 9.5" (240mm) | 6 | 140mm | 1-13/16" | MS14069.5 | \$898.75 |
| 12.2" (310mm) | 6 | 140mm | 1-13/16" | MS1406310 | \$1196.00 |
| Product Description | | | | Part # | Price |
| Spare Knives -15 x 15 x 2.5mm - 8 Radius | | | | IC-2515154-8R | \$2.61 each |
| T20 Torx Wrench - 8" | | | | MS-T20W | \$6.50 each |
| Spare Screws for Titan Spiral Heads M6-15 (Torque 4ft/lbs = 50inch/lbs) | | | | MS-KS615 | \$0.88 each |
| Spare Screws for Byrd Journal Heads | | | | MS-BS-S | \$0.50 each |
| Spare Screws for Weinig Spiral Heads | | | | MS-NA-S | \$3.00 each |
| Spare Screws for Shinmax Spiral Heads | | | | MS-KSSM | \$1.00 each |

* Non-Shear Type See page 36 for Reference Engravers.



Not shown to scale.

Spiral heads now come with face shear for smoother cutting.



See page 22 for insert knife listings.

Custom heads also available including hydro bore and self centering spiral heads.

