

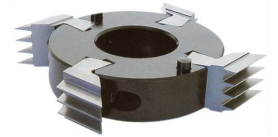
## European & Japanese Finger Joint Wing Cutters

We also offer a complete selection of finger joint wing style cutter heads. Wing cutters are generally used on European and Japanese manufactured finger joint systems. We offer quick deliveries and technical support on all international joint standards. Wing cutters are offered in High Speed Steel or Carbide Tip for hardwoods. We supply wing cutters from 2 to 10 wings for feed rates up to 200 blocks/min. at 6,000 rpms.



### Standard Wing Cutters

Joint Length	Pitch Thickness	Tip Thickness	Joint Type
4mm	1.6mm	.3mm	European - Millwk
9 / 12mm	3.7 - 4mm	.6mm	Japanese - Millwk
10 / 11mm	3.8mm	.6mm	European - Millwk
15 / 16mm	3.8mm	.6mm	European - Structural
20 / 21mm	6.2mm	.8mm	Hort'l - Structural



### Custom Saw Style Finger Joint Cutters

Other custom joint styles are offered. Standard cutting circles are 160 mm and 250 mm. Standard bores are 50 mm & 70 mm. Bushings are available for smaller shaper spindles.



### Japanese Style 2-Wing Cutters (Carbide Tipped)

Dia.	Thick	Bore	Joint Length	Price
160mm	4.0mm	70mm	12mm	\$29.00
	4.0mm	50mm	12mm	\$29.00
	9.0mm	50mm	12mm	\$57.00
	10.0mm	50mm	12mm	\$57.00

Wing cutters also offer an economical way to finger joint on a shaper or tenoner. You can recover your shop fall down or scrap blocks & produce high value finger jointed components for as little as a few hundred dollars in tooling costs.

We offer wing cutters to either produce small gaps at the ends of the joint, or closed up without a tip gap. If you are exporting your products outside North America your customers may request the tip gap option. Wing cutters provide high strength values because of their thin pitch and thin tip design.



Insert knife style wing cutters are also offered. Single inserts can be replaced at a lower cost if a tip should break off. Insert style heads offer a long term lower cost option for finger jointing on larger production machines. Call for a complete cost comparison.

